

## Tarentatom (V1.2)

**A 1 & 2**

♩. = 130

Measures 1-8 of section A 1 & 2. The music is in 12/8 time, key of B-flat major. It features a repeating eighth-note pattern in the right hand and a bass line in the left hand. Measure 1 starts with a repeat sign. Measure 2 has a *mf* dynamic marking. Measure 8 ends with a double bar line.

**B 1 & 2**

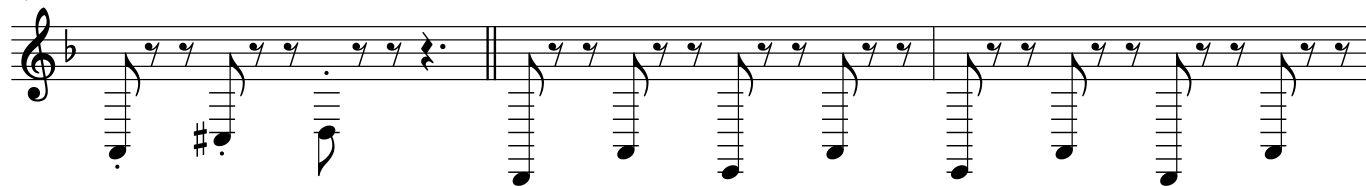
Measures 9-11 of section B 1 & 2. The music continues the eighth-note pattern. Measure 9 starts with a repeat sign. Measure 11 ends with a double bar line.

**C 1 & 2**

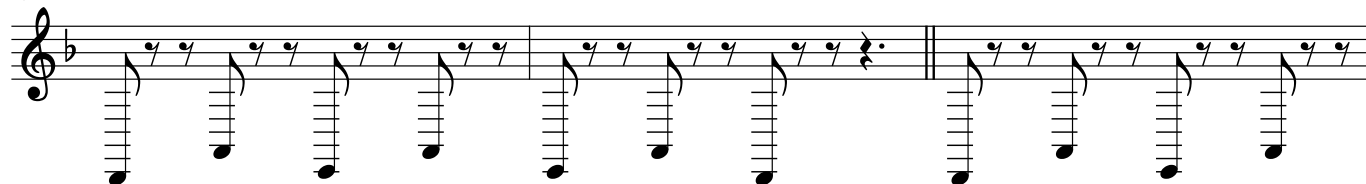
Measures 12-21 of section C 1 & 2. The music continues the eighth-note pattern. Measure 12 starts with a repeat sign. Measure 15 ends with a double bar line. Measure 18 has a key signature change to C major (F#). Measure 21 ends with a double bar line.

**D 2 & 3**

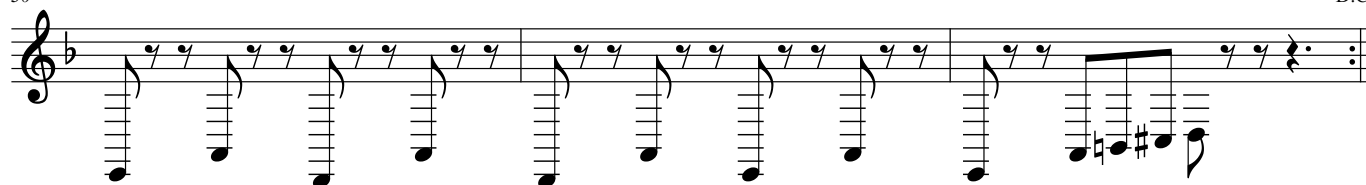
24



27



30



D.C.